

They Need Us. We Need You!

NIWRA exists to care for animals with all types of needs, including:

- Birds with broken wings
- Black bear cubs
- Electrocuted eagles

Each year we admit approximately 800 animals who need help.

We release as many animals back to the wild as possible.



Animal Care team assesses an injured bald eagle



Farley, the Great Grey Owl

Did you know?

We are active on Facebook and Instagram. If you would like to follow us to keep up to date on our daily stories and activities, go to:

Facebook: [wildliferecoverycentre](https://www.facebook.com/wildliferecoverycentre)

Instagram: [north_island_wildlife_recovery](https://www.instagram.com/north_island_wildlife_recovery)

Get wildlife stories delivered directly to your inbox!

Subscribe: www.niwra.org/subscribe



NORTH ISLAND wildlife recovery CENTRE

We have had a busy year at the North Island Wildlife Recovery Centre (NIWRA) and we thank you for your support.

Blizzard & Buddy, Rare White Ravens at NIWRA

NIWRA is home to two white ravens—Blizzard and Buddy.

Highly revered and shrouded in mystery, white ravens are known for their distinctive white feathers.

Leucism is a genetic disorder that affects the pigmentation of the cells and is marked by an overall pale colouring in feathers and skin. Studies suggest these blue-eyed ravens do not live past their second year in the wild due to poor immune systems, making them all the more rare.

Blizzard was our first admission. He was emaciated, unable to fly and had infections on his feet. After a full year of intensive care, Blizzard is healthy and lives in a custom enclosure with ample protection from the sun.

Buddy, the younger white raven, arrived in much the same condition the following year. With specialized care by our animal care department, he regained his health and is being glove trained as an animal ambassador.

We hope you can come visit these special birds soon!



Blizzard

Donor Impact Report



Buddy and Robin Campbell

Hundreds of Animals Admitted Each Year

From tiny songbirds to endangered turtles, to many types of raptors (eagles, owls, falcons, ravens), squirrels, and bear cubs.

Your generosity enables us to rescue and rehabilitate animals in need and release them back into the wild where they belong.

Thank you for your support; it is so appreciated.

Mail:
Box 364,
1240 Leffler Road,
Errington, BC V0R 1V0
Phone: 250-248-8534
Email: wildlife@niwra.org

Improving Critical Animal Care Facilities

The public doesn't see where our animal care staff treat rescued animals in need of care, but the facilities were aging and in need of improvement.

Thanks to your generous support, we have been able to move forward with an ambitious plan to expand and update the treatment area, improve sanitation, and provide storage space.

We've also been able to improve working conditions for staff, providing them with a much more suitable staff room where they can take lunch breaks and clean up after animal care to prevent the spread of disease.



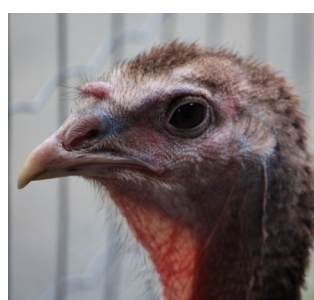
Gone But Not Forgotten

NIWRA says goodbye to three special friends

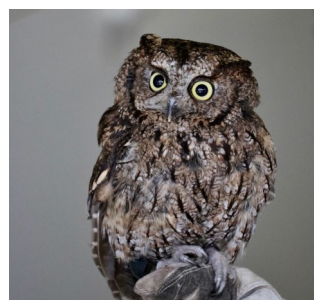


Nugget, our Stellar's Jay, passed away in June. He lived a long life, despite many health concerns.

We will miss his vibrant, friendly personality.



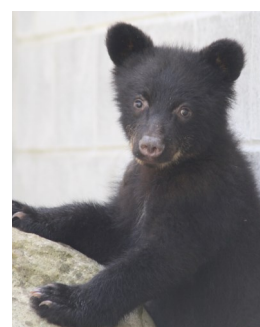
Bobbie, a beloved turkey who always had hellos for visitors, passed away in May after a long life.



Sadly, Willow, our sweet, diminutive Western Screech Owl, who was one of our favourite animal ambassadors, passed away in March.

Animal News

This year we had an amazing cohort of cubs.



One from Campbell River had quite the fanfare, as it had entered a house and was found hiding behind some house plants!

The Conservation Officers captured her, and she was brought to NIWRA.

She was released in June along with three cubs from Qualicum Beach and one from

Sooke. All five cubs went back to their respective areas.

Our collaring partnership with the Ministry continues to be an amazing success and the data recorded is extremely valuable for the conservation of black bears on Vancouver Island. All NIWRA bears are collared before release.

We were happy to learn that last year's cubs found great den sites for wintering on their own.



Animal News - continued

One cub made a beeline for the west coast and island hopped just off the northwest coast before denning down.

Only days after last year's cubs were released, our first 2023 cubs arrived from the Victoria area.

They are three siblings, and they are all doing fantastically well! They will be cared for until they can be released back into their natural habitat next year.



A clutch of 11 Coastal Western Painted Turtles (WPTs) were brought to us. Coastal WPTs are designated federally as endangered and red-listed in BC.

Unfortunately, these young turtles were accidentally unearthed from their nest chamber in February. They would have stayed in their nest chamber until springtime before emerging.



We have been growing them up (head-starting them), before releasing them back into the wild. Since the species is struggling, we are trying to improve the success rate of this clutch by raising

them to a size that prevents them from being easy targets for predators, especially non-native predators like bullfrogs that like snacking on baby turtles.

This is new and exciting territory for NIWRA!

Your gifts help provide the many animals that come to us with the specialized care they need.



your support helps
wildlife

Veterinary Care

Our wildlife veterinarian and skilled animal care technicians ensure all wildlife receive the highest quality care possible.



Specialized Diets

All wildlife at NIWRA receive balanced, nutritious food essential to health and healing.



Medical Equipment

Our animal care team has fully equipped treatment and recovery rooms to provide the best medical care.